



# Annual **IMPACT** Report

2022

952-471-8701

[foundation@hopechest.com](mailto:foundation@hopechest.com)

[www.hopechest.com](http://www.hopechest.com)



# Mission of Hope

Hope Chest for Breast Cancer Foundation, a Minnesota based 501(c)(3), has been a source of hope for local breast cancer patients and their families since 2001.

2022 was a year unlike any other! We experienced unprecedented levels of demand from the women and families we support. Fueled by the delayed diagnosis during the pandemic and combined with the rising costs of everyday living expenses, our patients needed us more than ever before. THANKS TO YOU, our generous community of donors and community partners; we were able to help more! We helped patients and distributed more funds than any other time in our over 20-year history.

HELPED MORE PATIENTS THAN  
IN ANY TIME IN OUR HISTORY

**268**

patients received  
financial support

DISTRIBUTED THE MOST  
FUNDS THAN ANY OTHER YEAR  
IN OUR HISTORY

**73%**

more than in 2021

**45%**

increase in patients  
served over 2021

**19%**

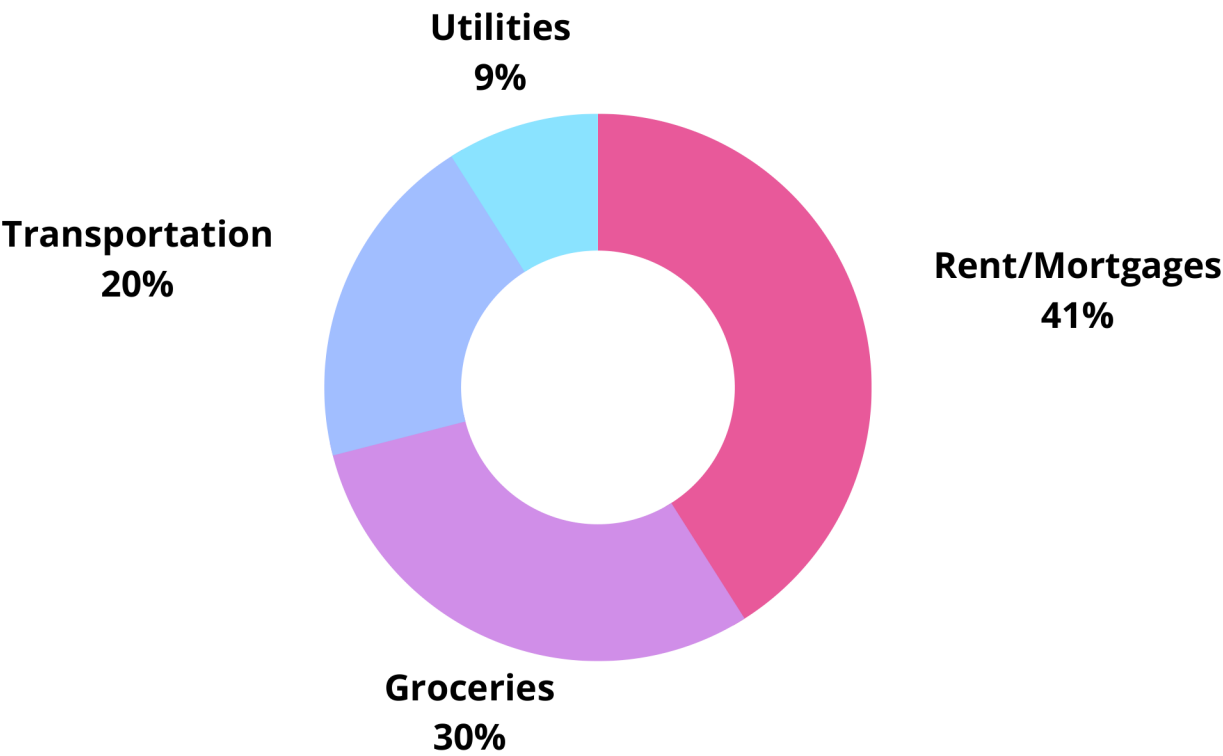
average growth in amount  
awarded to patients

# Sharing Hope

## Through Patient Grant Distribution

Since 2001, Hope Chest has distributed nearly \$2.5 million financial assistance grants to over 5,700 Minnesota breast cancer patients and their families. Each grant represents hope and relief, two elements that are crucial in the fight against cancer. Hope Chest grants have paid rent and mortgages. They've covered car payments, utility bills, daycare costs and provided nutrition.

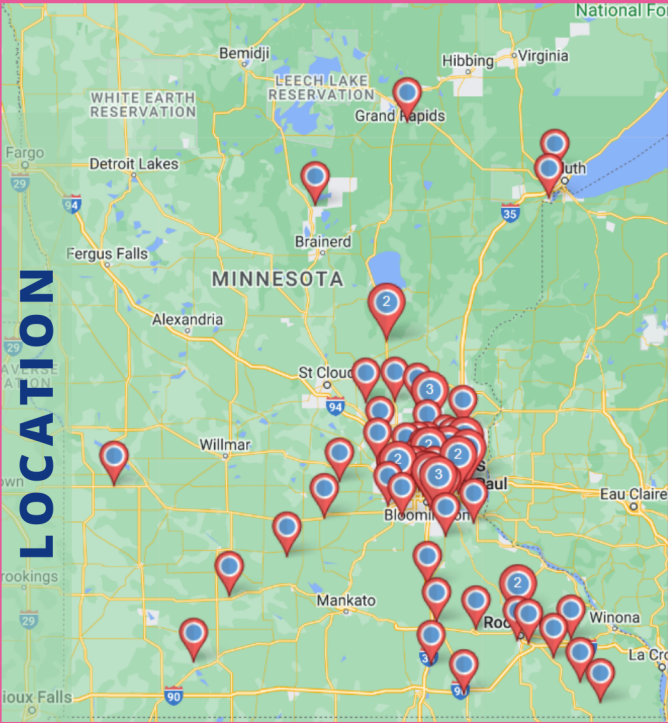
PERCENTAGE OF  
EXPENDED FUNDING



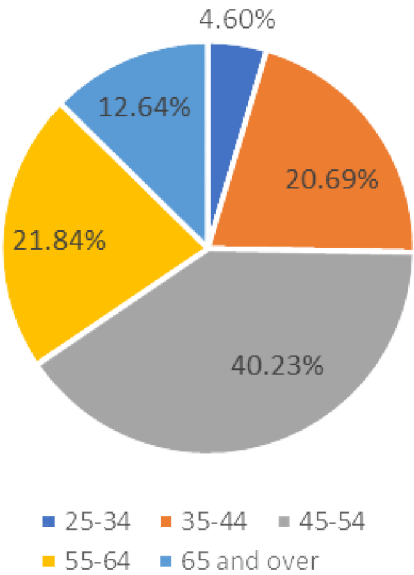
# Sharing Hope

## Through Patient Grant Distribution

Hope Chest provides aid to Minnesota breast cancer patients statewide. This map shows the geographic breadth of grants distributed across the state throughout 2022.



### AGE



Breast Cancer affects people of all ages, but the likelihood of a cancer diagnosis increases with age. This chart illustrates the percentage of grant distribution by age.



# Partners in Hope

Because of attendees **LIKE YOU**, in 2022 we **exceeded our event fundraising goal by 47% by raising nearly \$130,000!** That means more women across Minnesota were able to receive support during one of the most challenging times of their lives!

Hope Chest for Breast Cancer Foundation hosted 3 events in 2022: Gourmet Pantry, Runway for Hope and Wine and Dine for Hope.

Gourmet Pantry, an online silent auction, featured unique culinary experiences, restaurant gift cards, and cooking ware, while generous donors also purchased Cub Foods gift cards for breast cancer patients.

Runway for Hope is a Fashion Show designed with our partners at Galleria. While models walked the runway, guests enjoyed refreshments and raised money for breast cancer patients through an online auction and live auction. Post event, attendees enjoyed exclusive shopping experiences at Galleria shops!

Wine & Dine for Hope was also a great success in 2022! As attendees enjoyed a three-course fall tasting menu with three perfectly paired wines while listening to patients share their stories. Attendees bought raffle tickets, bid on silent and live auction items, and got lively during Fund-a-Need to raise funds for our community.



## 2023: SAVE THE DATE

**RUNWAY FOR HOPE**                      **MAY 7, 2023**

Spring fashion extravaganza with light brunch bites, sparkling wine, spring style.

**WINE & DINE FOR HOPE**                      **NOV, 8 2023**

Three-course fall tasting menu featuring perfectly paired wines.

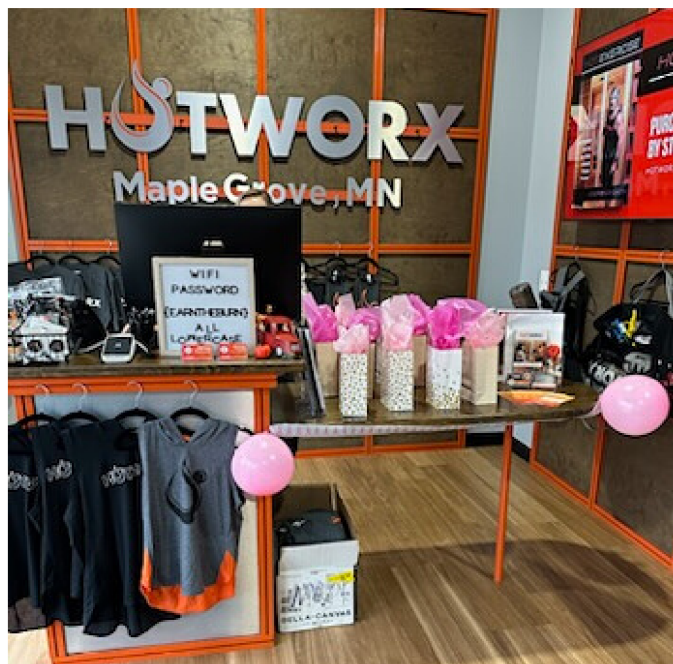
# Hope in Action



Hope Chest for Breast Cancer Foundation is so fortunate to be part of a caring business community. In 2022, cause marketing partners generated over \$135,000 in donations to us.

Thank you to our partners, and thank you to our donors for continuing to frequent those businesses that support us. Your generosity knows no end.

We are fast at work on the 2023 promotions and events, and you can always find our most current line up on our website at [hopechest.com/event](https://hopechest.com/event). And if you represent a business that would like to support us, please reach out to us at [event@hopechest.com](mailto:event@hopechest.com)

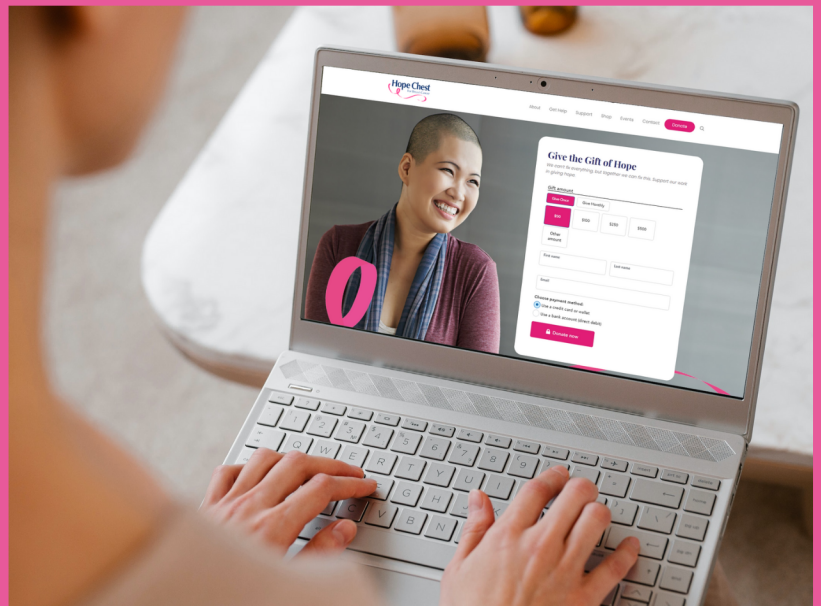




# Advancements in Hope

In 2022, Hope Chest for Breast Cancer Foundation invested in advancements to improve the ease and accessibility to patients, donors and partners through the launch of new website, new application portal, and multi-language translations.

If you haven't already, check it out at [hopechest.com](https://hopechest.com)



“

The Hope Chest Grant made a difference by "reduc[ing] the stress and burden of everyday expenses while I was going through chemotherapy treatments. Due to the treatments my work hours were reduced, which also reduced our income...

Any contributions, big or small, help families who have a family member with breast cancer. It helps the family not have to worry so much about a bill, gas, groceries or whatever they need the grant for."

- Tiffany S

# Inspire Hope



## YOUR CONNECTION TO HOPE

We're here to support you as you support Minnesota breast cancer patients and their families! Dorothy Grinolds, our Development Officer, is your personal connection to Hope Chest, "It is my privilege to share stories of how your support makes a real change in the lives of breast cancer patients and their families, and listen to how breast cancer has impacted your life."

It is with this understanding, she works to make donors' individual giving priorities go further. Connect with Dorothy today at [dgrinolds@hopechest.com](mailto:dgrinolds@hopechest.com) to learn more.

## DOUBLING YOUR IMPACT

Double your impact up to \$5,000 by giving now through May 31st!

This spring, a generous donor will double your donation up to \$5,000! All money raised through this campaign will go directly to help Minnesota breast cancer patients. Together we can help keep families in their homes, their lights on, food on their table, and change the lives of even more breast cancer patients.

## MONTHLY GIVING

Our monthly donors are a compassionate and dedicated group of supporters on a mission to give hope to local breast cancer patients. Scheduled monthly giving is the easiest, most efficient way to give, providing consistent financial support so the Hope Chest for Breast Cancer Foundation can provide immediate relief to patients with breast cancer.

Simply select "become a monthly donor" when you make a donation on our website. You can change the amount or cancel at any time.

“

**Thank you. Getting a diagnosis of cancer is scary enough. Not having to worry about how to "pay the bills" or buy food while you are out of work is one less thing.**

Kellie C.

”

# Gift of Hope

Give the gift of hope and be the reason a Minnesota breast cancer patient has heat in their home and a home to live in; The reason they don't have to decide between nutritious food and fighting to become healthy again.

Visit our website to receive assistance, volunteer, make a gift, or learn more about upcoming events.

"You are amazing souls and a blessing to us cancer fighters. We appreciate everything you have done and am doing. Without your generosity, we'd be so lost. Thank you!"

- Tuah V.



Phone Number

**952-471-8701**



Email Address

**foundation@hopechest.com**



Website

**hopechest.com**

